

On The Disk...

A run-down of what's included on the free disk with this issue

Collated and tested by Mike Orriss

Each month, subscribers to The Delphi Magazine receive a *free* companion disk packed with goodies. This includes the source code and example files for all the articles in the current issue.

But, there's much more too! We've sifted through a great many tools, components and other Delphi add-ons to bring you some of the best shareware and freeware material available, as outlined below. The headings are the directory names where you will find the files on the floppy disk.

➤ SHAPEWIN

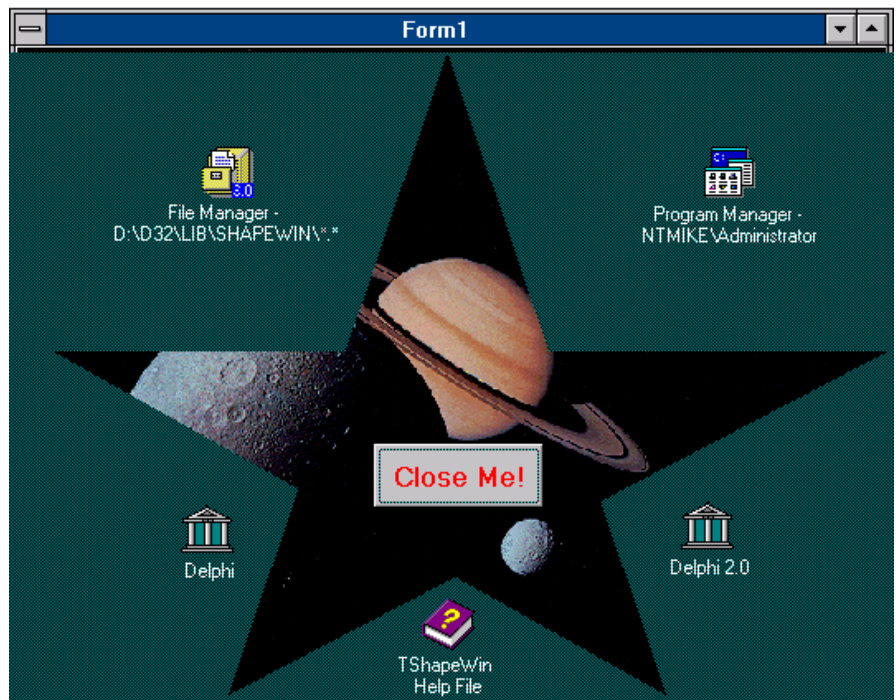
This is a Delphi 2 component that provides a simple method of creating odd shaped windows. All you need do is drop a component on the form and set the WindowShape property to SCDRom, Scircle, Striangle or Scustom. The latter also requires some code in its OnShapeDraw event: values for the TPoint array passed. With a routine that builds a TPoint array from an image outline I could build a very nice About box!

➤ EXTPAGE

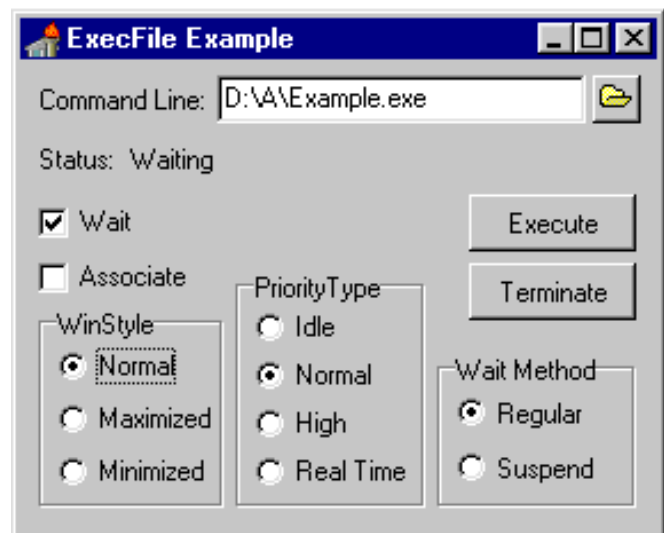
Borland did not include the OwnerDraw style in their Delphi 2 TPageControl. This is a freeware replacement that makes a new event OnDrawTab available, so you can draw, for instance, bitmaps on the notebook tabs. You can also set a different font and colour for the active and the inactive tabs. Additional facilities include the ability to define a different hint for each tab and a property that replaces the tabs with buttons.

➤ CHFLZ101

This package contains ready to use Borland Pascal and Delphi sources for LZSS (LZ77) compression. Although the package is called *CHIEFLZ*, it is the joint work of The African Chief (Dr Abimbola



➤ Above:
ShapeWin



➤ Right:
ExecFile

Adeleke Olowofoyeku), and Chris Rankin. Most of the Win32 (Delphi 2.x) sources were written by Chris Rankin, who also ported the 16-bit ASM code to 32-bit for Delphi 2.x.

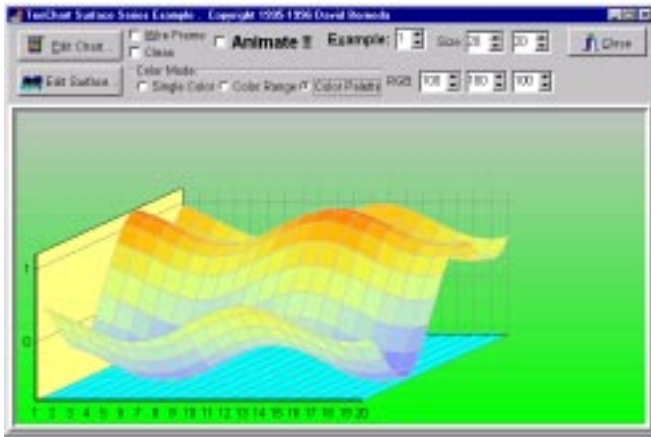
➤ NMPATCH

The NetManage ActiveX controls supplied with Delphi 2.01 contain some embedded time bomb code that will cause an error message to be displayed from the ActiveX

enabled application at load time if the date is 6 January 1997 or later. The message is the only effect of the time bomb. This utility (RELACER.EXE) will remove the time bomb code from your controls by editing the binaries for each affected control.

➤ TEECHART

This is a brilliant 32-bit demo program for David Berneda's fantastic



TeeChart component. Even if you don't require a charting component at present, it is worth taking a few minutes to see just how good David has made this demo: he is setting a standard others will find difficult to emulate! *[I think Mike likes this one...! Editor]*

➤ **EXECFILE**

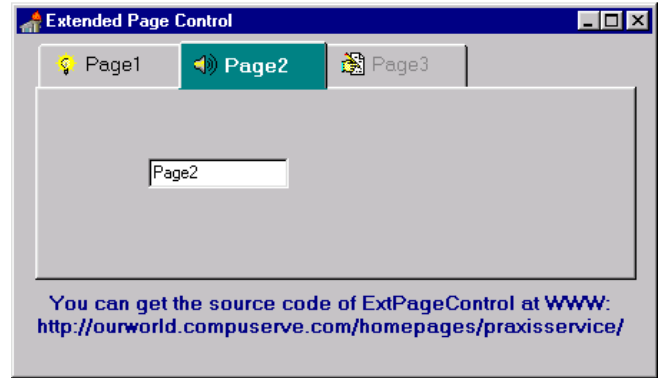
TExecFile is a free non-visual component (with source code) that simplifies executing other programs from within your program.

➤ **INTERNET**

Listing of Delphi-related World Wide Web and ftp sites.

➤ **USERGPS**

List and contact information for Delphi User Groups.



➤ Above: Extended Page Control (EXTPAGE)

➤ Left: TeeChart demo (see also cover shot)

Important Note!

Always, but **always** make a backup copy of your component library file *before* you take the plunge and install *any* new component into Delphi! Sometimes component installation can trash your component library and you will then be left with an inoperative Delphi will have to re-add *all* your extra components.

Send In Your Code...

If you have some carefully crafted routines, why not send them in for evaluation by mail or (zipped up) by CompuServe email to our Disk Editor, Mike Orriss, on 100570,121. We do consider *all* submitted files for use on future disks.